

integral solutions

ALUMINIUM

archi
tecture



9 PRODUCTION CENTRES



3205 EMPLOYEES



636 MILLIONS TURNOVER



139.000 t PRODUCTION CAPACITY



31 DISTRIBUTION AND LOGISTIC CENTRES

CORTIZO

GLOBAL PRODUCTION CAPACITY



CORTIZO, an international leader in the design and manufacture of aluminium and PVC. Our production capacity consists of 150,000 t of aluminium and 45,000 t of PVC. This enables us to meet the requirements of our customers across more than 80 countries in which we are currently present.

Systems chart

ALUMINIUM

SYSTEM	U _f W/m ² K	U _w W/m ² K	SYSTEM	U _f W/m ² K	U _w W/m ² K
Cor 80 Industrial Passivhaus	0.94	From 0.66	Cor 60 Hinged	2.8	From 1.0
Cor 80 Industrial	1.1	From 0.71	Bi-Fold	2.8	From 0.97
Cor 80 Hidden Sash	1.2	From 0.71	Cor Vision EVO	3.2	From 0.88
Cor 70 Industrial	1.3	From 0.76	4700 In-line Slider / Lift & Slide	3.4	From 1.0
Cor 70 Hidden Sash	1.4	From 0.84	Cor 3000 Hinged	3.4	From 1.3
Alu-Steel	1.7	From 0.83	Cor 60 Hidden Sash Hinged	3.6	From 1.5
Bi-Fold Plus	1.7	From 0.8	Cor Vision Plus Sliding	3.8	From 0.9
Millennium Plus 80 Door	1.7	From 0.8	Cor Vision Sliding	3.9	From 1.3
Cor 70 C16 ST	1.7	From 0.9	4200 Sliding	4.0	From 1.5
Cor 70 Evolution	1.7	From 0.81	5000 Double Sliding	4.0	From 1.3
4600 Plus Lift & Slide	1.8	From 0.65	Cor 2000 Hinged	5.7	From 1.8
Cor 70 OC	1.8	From 1.0	Cor 2300 Hinged	5.7	From 2.0
Cor Galicia Premium C16	2.1	From 1.1	6200 Sliding	5.7	From 3.2
Cor 3500 Hinged	2.3	From 1.0	Millennium 2000 Door	5.7	From 2.3
Cor Urban C16	2.3	From 1.2	Mediterranean Balcony	5.7	From 2.1
Millennium FR Door	2.4	From 1.4	2000 Perimetral Sliding	5.7	From 2.9
Millennium Plus 70 Door	2.5	From 0.9	5000 Sliding	5.7	From 2.3
Cor 3500 C 16 ST	2.7	From 1.2	6500 Sliding	5.7	From 2.2
Casement	2.7	From 1.0	6500 Plus Sliding	5.7	From 2.0
4900 HI Sliding	2.7	From 1.2			

Consult typology, dimensions and glazing.
Consult transmittance of different joints.

// Completed projects



_ Halletts Point
New York, **USA**

PVC

SYSTEM	U _f W/m ² K	U _w W/m ² K
A 84 Passivhaus HI Hinged	0.76	From 0.66
A 84 Passivhaus 1.0 Hinged	1.01	From 0.74
A 84 Passivhaus 1.0 Reduced Reinforcement Hinged	1.00	From 0.74
A 84 Hidden Sash Passivhaus	1.05	From 0.71
A 84 Hidden Sash	1.11	From 0.74
A 84 Hinged	1.16	From 0.79
A 70 Hinged	1.3	From 0.9
C 70 Sliding	1.8	From 1.3
E 170 Lift & Slide	1.6	From 0.9

CORTIZO ISOLATION

Roller Shutter box 200 mm
Roller Shutter box 160 mm

USB SHUTTER BOX

0.66 (W/m²K)
0.97 (W/m²K)

Consult typology, dimensions and glazing.
Consult transmittance of different joints.

// Ongoing projects



_ Pilatus Tower
Switzerland



_ World Trade Center Santo Domingo
Dominican Republic



_ Cambridge
USA



CORTIZO IS QUALITY

The quality of all CORTIZO products is based on the strict tests carried out in official, national and international laboratories, as well as by our technical staff in our own test benches.

R+D

Design, innovation and quality are the protagonists in the more than 80 window, door, façade, composite panel, balustrade and solar protection systems designed by our R&D department. CORTIZO enclosures adapt to the climate and construction particularities of thousands of projects around the world. Single-family and collective housing, hospitals and health centres, hotels, administrative buildings, infrastructures, sports centres, commercial and industrial spaces, social and cultural centres...

The adequate selection of raw materials and the control of all parameters that influence the extrusion process, backed by the ISO 9001 international certification, guarantee the quality of the extruded material. Additionally, the meticulous work in the execution of the surface treatments has allowed us to obtain the most demanding European quality certificates, such as QUALICOAT, QUALIDECO and QUALICOAT SEA SIDE for the laquering process, and the EWVA-EURAS for the anodizing process.





CORTIZO LAB

The Cortizo LAB software allows for the immediate production of calculations, test results and classifications of all enclosure systems designed by CORTIZO and tested in its Technological Centre, for any dimension, typology and glazing (windows, doors, double joinery, façades, roofs and louvres).

Thermal performance

Acoustic performances

AEV Tests:

- Window and door systems: EN 12207 / EN 12208 / EN 12210

- Façades: EN 12152 / EN 12154 / EN 13116

Microventilation

Mechanical Calculations

Calculation and production of wind and snow load reports

CORTIZO BIM

Virtual management of enclosure designs

BIM training Personalized assistance

BIM customized solution designs

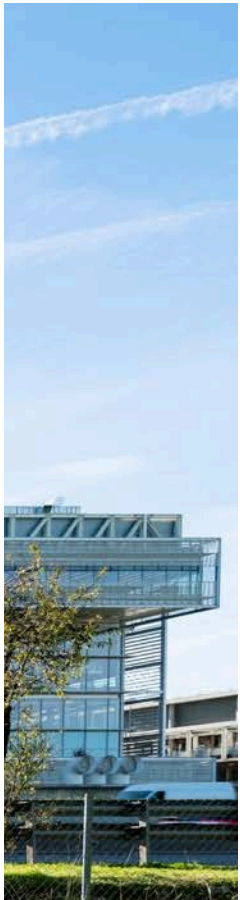
Founded on the 3D reproduction of each of the structural elements that make up a building, this technology allows for a more quick and comprehensive parametric design of the projects, offering digital replicas of our enclosure systems. The BIM library incorporates intelligent objects that implicitly carry all the technical, thermal, acoustic and mechanical information, virtually reproducing their behaviour in reality.

sustainability



_Santander Bank Headquarters
Spain

// Completed projects



Green building consultation
greenbuilding@cortizo.com

CORTIZO ECOEFFICIENT

Aluminium life cycle "cradle to cradle".

Via its two foundries, CORTIZO RECYCLING transforms aluminium waste into raw material for the extrusion of profiles, thus closing the cycle of a 100% reusable material.

More than 2400 pick-up points of aluminium scrap in Europe.

Low energy consumption in recycling (only 5% compared to primary consumption).

Officially certified purifying stations



contemporary
enclosures



Aluminium for **architecture**

COR VISION Plus

Sliding
Thermally broken

The greatness of minimalism is reflected in this sliding system of large dimensions with sashes of up to 4 meters, interlock sightline of only 25 mm and frames embedded in the perimeter, allowing for a glazed surface of up to 94%. It has a maximum glazing capacity of 56 mm, offering excellent thermal and acoustic performances. Available with manual (up to 400 kg) or motorized (up to 700 kg) opening system. Additionally, accessibility is favoured by the possibility of hiding the rail and even integrating it fully into the floor.

FEATURES

Transmittance		$U_w \geq 0.9$ (W/m ² K)
Acoustic insulation		Rw up to 43 dB
Air permeability		Class 4
Water tightness		Class 7A* / 9A**
Wind resistance		Class C3* / C4**

Wind resistance: * Reference test balcony 4.00 x 3.00 m / 2 sashes
**Reference test balcony 4.00 x 3.00 m / 1 sash + 1 fixed light

Sightlines

Frame 180 mm / 278 mm 3 rails
Sash 69 mm

Polyamide Strip Length

Frame 40 mm
Sash 18 / 32 mm

Profile Thickness

Door 2.0 mm

Glazing

Max. 56 mm, Min. 36 mm

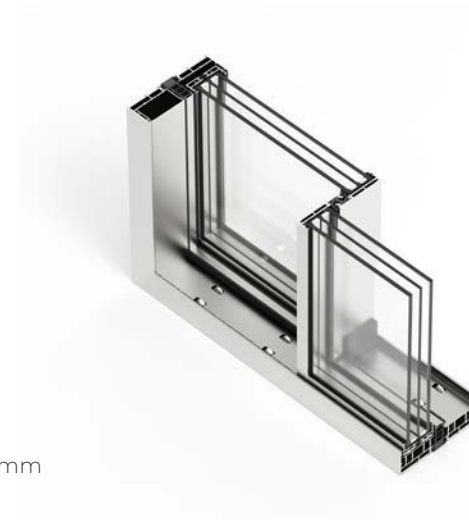
Maximum Sash Dimensions

Width (L) 4000 mm, Height (H) 4000 mm

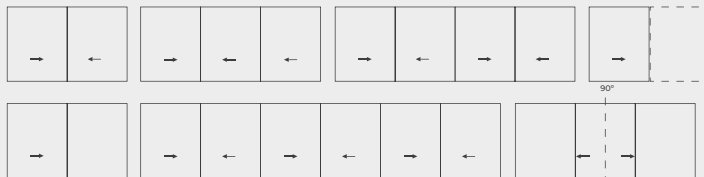
*Glazed surface 14 m²

Maximum Sash Weight

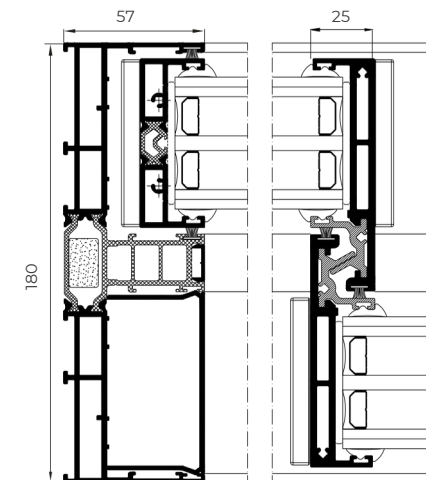
400 kg Manual
700 Kg Motorized
Consult maximum weight and dimensions according to typologies



OPENING POSSIBILITIES



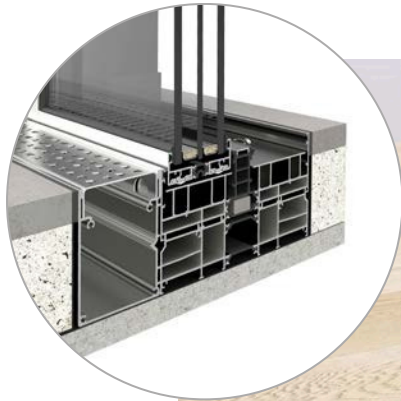
Sliding
Possibility of 1, 2, 3 or 4 rails
Possibility of inner and outer corner sash at 90° without mullion
Pocket possibility



COR VISION PLUS



DRAINAGE SOLUTION



HIDDEN TRACK SOLUTION

Possibility of **embedding the bottom profile and integrate it within the floor finish** (pallet, pavement, ceramic...), achieving a transition without any obstacle between the interior and exterior of the room.



**SECURITY
HARDWARE**

**FLUSH SECURITY
HARDWARE**

MAXIMUM SECURITY

Locking system with internal and external key.
Embedding of the hardware into the profile with the same minimalist aesthetic.
Possibility of powder coating in any color to provide uniformity to the ensemble.

POSSIBILITIES



AUTOMATION



ACCESSIBILITY



HIDDEN SASH
Allows the concealment of the sashes in the lateral corners

INTERLOCK PROFILE
Only 25 mm



Option of
INTERLOCK HANDLE

MAX. GLAZING
Up to 56 mm

LARGE DIMENSIONS
Up to 4000 mm of height or width / sash

UP TO 700 KG / Motorized
UP TO 400 KG / Manual

COR VISION PLUS

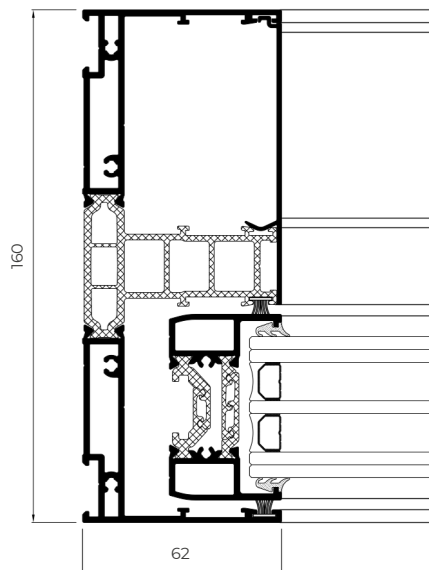
COR VISION EVO

Sliding
Thermally broken

The new version of the COR Vision Sliding accentuates its minimalism thanks to a closing system that allows the sashes to be embedded peripherally, opening up to infinite views that are only interrupted by a 25 mm interlock.

FEATURES

Transmittance		$U_w \geq 0.88$ (W/m ² K)
Air permeability		Class 4
Wind resistance		Class C5



Sightlines

Frame 160 mm / 248 mm 3 rail
Lateral sightline 62 mm
Interlock 25 mm

Glazing

Max. 44 mm, Min. 28 mm

Maximum sash dimensions

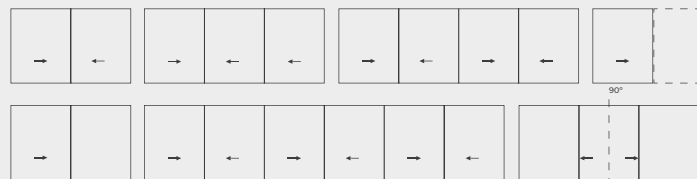
Width (L) 3000 mm, Height (H) 3500 mm

Maximum sash weight

500 kg

Consult maximum weight and dimensions according to typologies

OPENING POSSIBILITIES



Sliding

Possibility of 1, 2, or 3 rails
Possibility of inner and outer corner sash at 90° without mullion
Pocket possibility



OPEN

90°

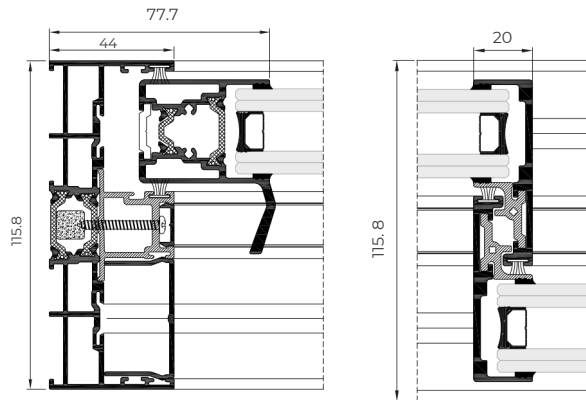
CLOSE

The new lock of the COR Vision EVO is conceived to achieve total concealment of the sashes behind the frame, activating the opening and closing of the window with a smooth semicircular turn.

COR VISION

Sliding
Thermally broken

Thermally broken minimalist sliding system that provides maximum luminosity with a minimal aluminium interlock profile. It has an elegant design only 20 mm sightline and offers the possibility of an inlaid closing system and of hiding the frame along the perimeter. Possibility of locking system in the interlock, thus allowing the concealment of the sashes in the frame from a frontal view. Possibility of embedded locking system which facilitates the sashes crossing.



Sightlines

Frame 116 mm / 182 mm 3 rails

Sash 37 mm

Polyamide Strip Length

16 / 24 mm

Profile Thickness

Door 1.7 mm

Glazing

Max. 30 mm, Min. 26 mm

Maximum Sash Dimensions

Width (L) 2500 mm, Height (H) 3000 mm

Maximum Sash Weight

320 Kg

Consult maximum weight and dimensions according to typologies

FEATURES

Transmittance  $U_w \geq 1.3$ (W/m²K)

Acoustic insulation  R_w up to 41 dB

Air permeability  Class 4

Water tightness  Class 7A

Wind resistance  Class C5

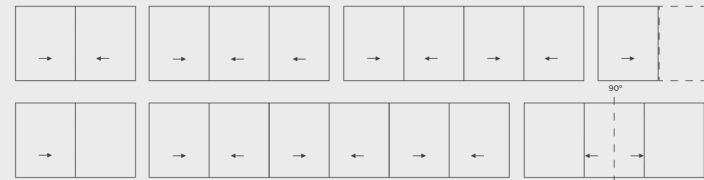
Security test  Passed

Reference test 1.23 x 1.55 m / 1 sash + 1 fixed light

POSSIBILITIES



OPENING POSSIBILITIES



Sliding
Possibility of 1, 2 or 3 rails
Possibility of inner and outer corner at 90° without mullion
Pocket possibility

COR VISION

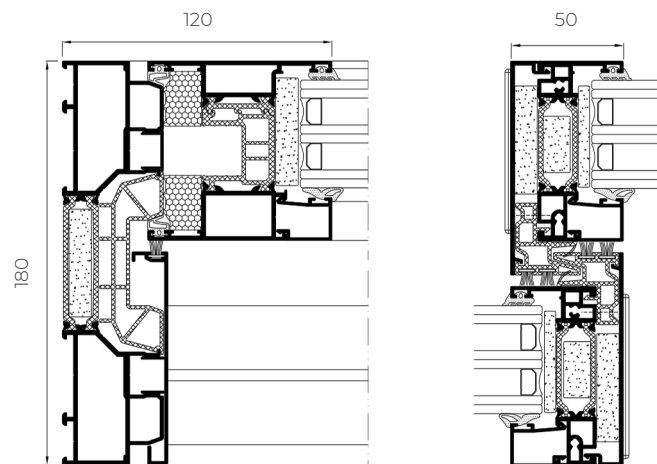


4600 PLUS

Lift & Slide

Sliding
Thermally broken

The new 4600 Plus Lift&Slide from Cortizo allows for the covering of large openings while ensuring exceptional thermal insulation. Its 80 mm deep sashes and special polyamides allow it to achieve a U_w transmittance of just 0,65 W/m²K, establishing itself as one of the sliding systems with the best thermal performance on the market. Furthermore, the perimeter interlock profile is reduced to 120 mm, allowing for an increased glazed surface and enhancing the entry of natural light into the rooms.



FEATURES	
Transmittance	 $U_w \geq 0.65$ (W/m ² K)



Sightlines

Frame 180 mm / 280 mm 3 rails /
380 mm 4 rails
Sash 80 mm

Glazing

Max. 65 mm, Min. 22 mm

Maximum Sash Dimensions

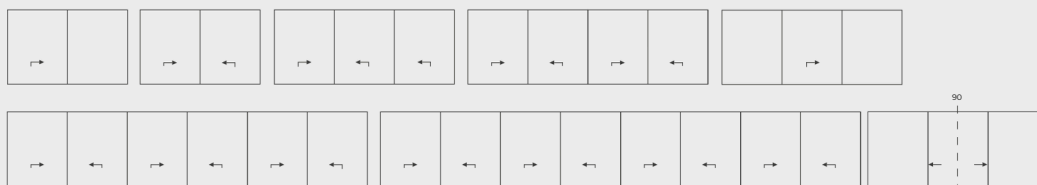
Width (L) 3300 mm, Height (H) 3300 mm

Maximum Sash Weight

400 kg

Consult maximum weight and dimensions according to typologies

OPENING POSSIBILITIES

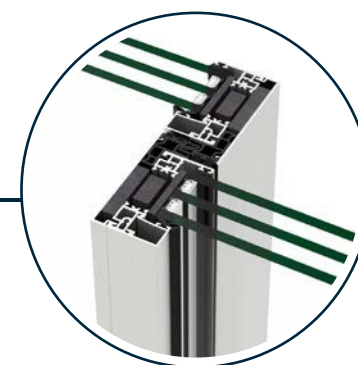


Sliding

1 rail (1 sash + 1 fixed light), 2, 3 & 4 rails
Possibility of 90° opening without mullion



4600 PLUS
LIFT & SLIDE



SLIM
INTERLOCK

Possibility of a **reduced interlock section of 50 mm** in monorail frame (sash + fixed light) and 2 rail frame, allowing a larger glazed surface.



COR 70 Hidden Sash



It could be a painting, but is a window. This is how we can describe the COR 70 Hidden Sash which, like the 80 mm version, has a sightline of only 66 mm and allows the incorporation of the ARCH INVISIBLE handle, concealed hinges and the drainage solution. Any element that breaks the visual harmony of the ensemble is discarded.

FEATURES		
Transmittance		$U_w \geq 0,84$ (W/m ² K)
Acoustic insulation		Rw up to 46 dB
Air permeability		Class 4
Water tightness		Class E1800
Wind resistance		Class C5
Security test		Passed

Reference test 1,23 x 1,48 m / 1 sash Security test:
Reference test 1,100 x 2,400 m / 1 sash CSTB
Laboratory DTA Certification

POSSIBILITIES



SECURITY
HARDWARE



CONCEALED
HINGES



CONCEALED
HANDLE



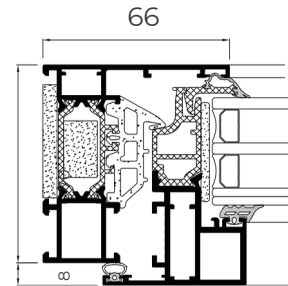
CONCEALED
DRAINAGE

OPENING POSSIBILITIES

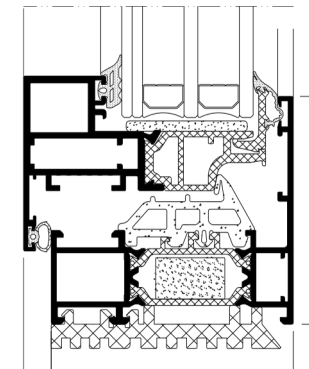


Inward Opening

Side hung
Tilt & turn
Tilt only
Parallel Sliding



CONCEALED DRAINAGE SOLUTION



COR 70 Hidden Sash

Sightlines

Frame 70 mm, Sash 70 mm

Polyamide Strip Length

35 mm

Profile Thickness

Window 1,9 mm

Glazing

Max. 40 mm, Min. 26 mm

Maximum Sash Dimensions

Standard solution:

Width (L) 1300 mm, Height (H) 2400 mm

HD Hardware (Side Hung):

Width (L) 1200 mm, Height (H) 3500 mm

Maximum Sash Weight

160 kg

Minimizes the aesthetic impact of the window components.

Compatible with all the 70 mm frame depth systems.

It features a gasket at the bottom of the frame to evacuate the water, replacing the front drainage caps. Facilitates window fabrication, allowing to place the base of the frame on the site itself.

First **invisible handle** on the market

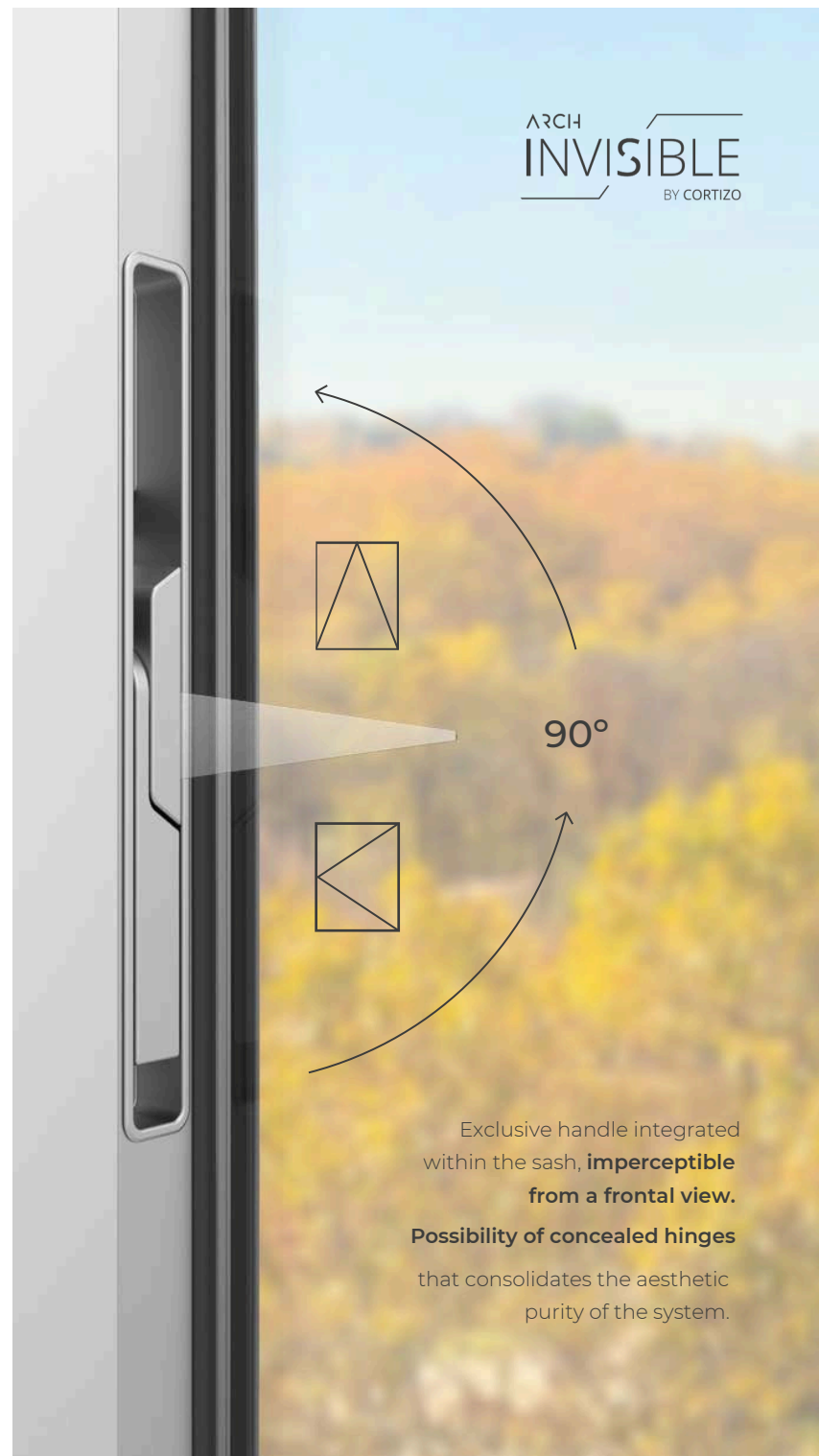
73



Solution for hidden sash systems **COR 80 HS**, **COR 70 HS** and **COR 70 OC**

Dimensions: **27.5 mm (L) x 234 mm (H)**

Ergonomics, robustness and easy handling in opening and closing operations. Totally clean aesthetics that simulate a fixed element, when in fact, it is a side hung or tilt & turn opening.



ARCH
INVISIBLE
BY CORTIZO

90°

Exclusive handle integrated within the sash, **imperceptible from a frontal view.**

Possibility of concealed hinges

that consolidates the aesthetic purity of the system.

ALU-STEEL

European Groove
Thermally broken



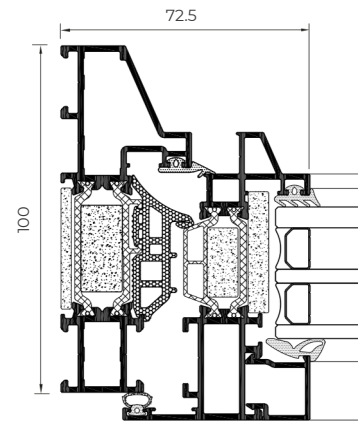
Inspired by classic line designs, the new Alu-Steel system allows to combine aluminium outstanding performances values with a steel-alike appearance. With a sightline of only 72.5 mm, Alu-Steel is a the perfect solution for new buildings and refurbishments, offering two different versions, classic or modern.



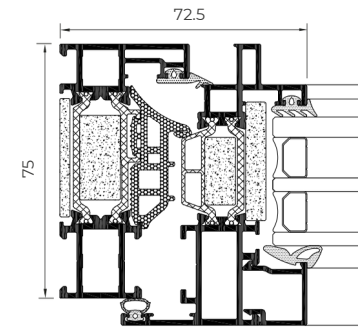
*Classic version



*Modern version



*Classic version



*Modern version

POSSIBILITIES



SECURITY
HARDWARE



CONCEALED
HINGES



CONCEALED
HANDLE



ACCESSIBILITY

OPENING POSSIBILITIES



Inward Opening

Side hung
Tilt & turn
Tilt only

Outward Opening

Side hung

FEATURES

Transmittance		$U_w \geq 0.83$ (W/m ² K)
Acoustic insulation		R _w up to 45 dB
Air permeability		Class 4
Water tightness		Class E1200
Wind resistance		Class C5

Reference test 1.23 x 1.48 m / 2 sashes

ALU-STEEL



Sightlines

Modern frame 75 mm

Classic frame 100 mm

Sash 83 mm

Polyamide Strip Length

32-39 mm

Profile Thickness

Window 1.5 mm

Glazing

Max. 54 mm, Min. 20 mm

Maximum Sash Dimensions

Width (L) 1500 mm, Height (H) 2600 mm

Maximum Sash Weight

160 kg

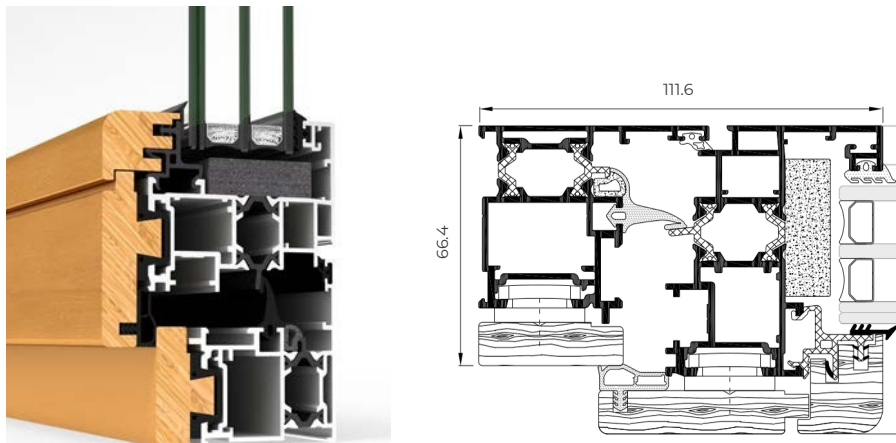
Consult maximum weight and dimensions according to typologies

COR GALICIA

Premium C16

16 Grooven
Thermally broken

Thermally broken mixed system that combines an external aluminium profile and its excellent performance with the warmth and design that an internal timber profile provides. Any of the finishes amongst the extensive range of CORTIZO powder coating or anodizing finishes may be selected for the surface treatment of the external face. On the other hand, the internal face is available in American oak, sapelly, mellis pine and other timber options available on request, all of them treated with a transparent, satin, dissolvent free ecological varnish.



POSSIBILITIES



FEATURES

Transmittance		$U_w \geq 1.1$ (W/m ² K)
Acoustic insulation		Rw up to 40 dB
Air permeability		Class 4
Water tightness		Class E1050
Wind resistance		Class C5

Reference test 1.23 x 1.48 m / 2 sashes

Sightlines

Frame 66.4 mm, Sash 85.3 mm

Polyamide Strip Length

Frame 14.8 mm

Sash 16 mm

Profile Thickness

Window 1.5 mm

Door 1.6 mm

Glazing

Sash: Max. 40 mm, Min. 18 mm

Fixed light: Max. 30 mm, Min. 8 mm

Maximum Sash Dimensions

Width (L) 1400 mm

Height (H) 2400 mm

Maximum Sash Weight

100 kg

Aesthetic possibilities:

Sash: Straight / Glazing Bead:

Curved

Consult maximum weight and dimensions according to typologies

OPENING POSSIBILITIES



Inward opening

Side hung
Tilt & turn
Tilt & parallel
Bottom hung

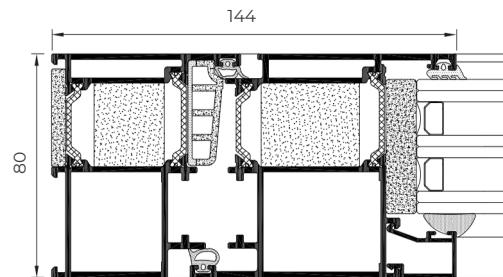
COR GALICIA PREMIUM C16



Millennium Plus 80

DOOR

Flush entrance door system with straight lines, 80 mm of frame depth, and a thermal break zone of 34 mm, particularly suitable for commercial and residential buildings.



Sightlines

Frame 80 mm, Sash 80 mm

Polyamide Strip Length

34 mm

Profile Thickness

Door 2.0 mm

Glazing

Max. 64 mm, Min. 15 mm

Maximum Sash Dimensions

Door:

Width (L) 1800 mm, Height (H) 3000 mm

Concealed door hinges:

Width (L) 1500 mm, Height (H) 3000 mm

Maximum Sash Weight

220 kg

Consult maximum weight and dimensions according to typologies



FEATURES

Transmittance		$U_w \geq 0.8$ (W/m ² K)
Acoustic insulation		Rw up to 40 dB
Air permeability		Class 4
Water tightness		Class 6A
Wind resistance		Class C4
Resistance to mild impact		Class 5 (Max.)
Repeated openings and closings		1,000,000 Cycles
Burglar resistance		Grade RC2

Wind resistance: Reference test 1.20 x 2.30 m / 1 sash Resistance to mild impact: EN 13049. Test on door reference 1.80 x 2.20 m / 2 sashes. Laminated glass 3+3 Resistance to repeated openings and closings: EN 1191. Test on door reference 2.10 x 2.20 m / 1 sash Burglar test NEN 5096: 2012+A1: 2015 in EN 1627:201

POSSIBILITIES



CONCEALED HINGES

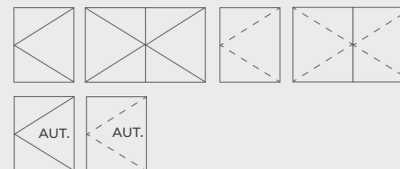


ACCESSIBILITY



AUTOMATION

OPENING POSSIBILITIES



Inward Opening

Side hung

Outward opening

Side hung

Automatic Opening

Inward and outward side hung

Millennium Plus 70

DOOR



Flush entrance pedestrian door system with 70 mm of frame depth that guarantees high thermal and acoustic insulation.



Sightlines

Frame 70 mm, Sash 70 mm

Polyamide Strip Length

24 mm

Profile Thickness

Door 2.0 mm

Glazing

Max. 54 mm, Min. 15 mm

Maximum Sash Dimensions

Door:

Width (L) 1800 mm, Height (H) 3000 mm

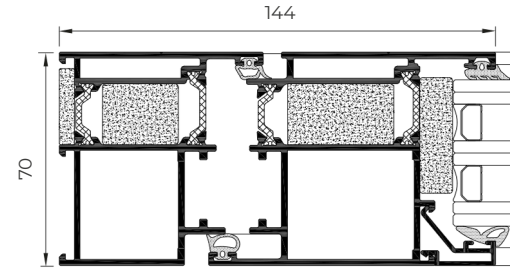
Concealed door hinges:

Width (L) 1500 mm, Height (H) 3000 mm

Maximum Sash Weight

220 kg

Consult maximum weight and dimensions according to typologies

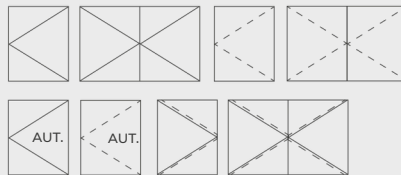


FEATURES

Transmittance	$U_w \geq 0.9 (W/m^2K)$
Acoustic insulation	R_w up to 38 dB
Air permeability	Class 4
Water tightness	Class 6A
Wind resistance	Class C4
Resistance to mild impact	Class 5 (Max.)
Repeated opening and closings	1,000,000 cycles
Burglar resistance	Grade RC2

Wind resistance: Reference test 1.20 x 2.30 m / 1 sash Resistance to mild impact: EN 13049. Test on door reference 1.80 x 2.20 m / 2 sashes. Laminated glass 3+3 Security test: EN 5096: 2012+AI: 2015 in EN 1627: 201 Resistance to repeated openings and closings: EN 1191. Test on door reference 2.1 X 2.2 m / 2 sashes Burglar test NEN 5096: 2012+AI: 2015 en EN 1627:201

OPENING POSSIBILITIES



Inward Opening

Side hung

Outward opening

Side hung

Automatic Opening

Outward and inward side hung

Swing Opening

Side hung

POSSIBILITIES



CONCEALED HINGES



ACCESSIBILITY



AUTOMATION



MILLENNIUM PLUS 80 DOOR



CONCEALED HINGES

The Millennium Plus door system allows **concealed hinges** that reinforce the flush aesthetic of the series

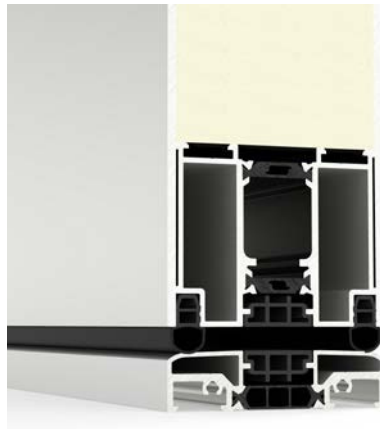


Millennium Plus Pivot

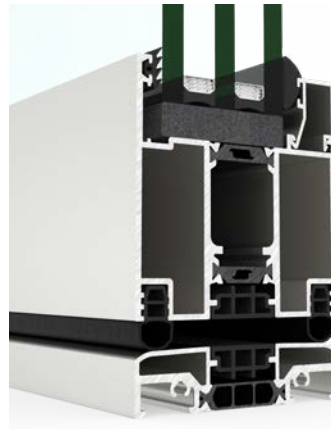
DOOR



The new CORTIZO entrance door system, available in a paneled or glazed version, responds to the latest design trends. Thanks to its axes, it allows large pivot openings, becoming a cutting-edge solution for contemporary architecture. Safety and excellent thermal and acoustic performance are also protagonists in a system that completes CORTIZO's catalog of minimalist solutions.



Paneled version



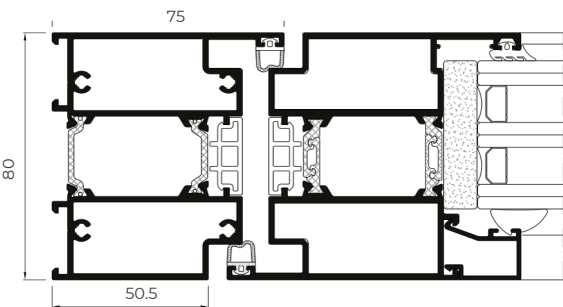
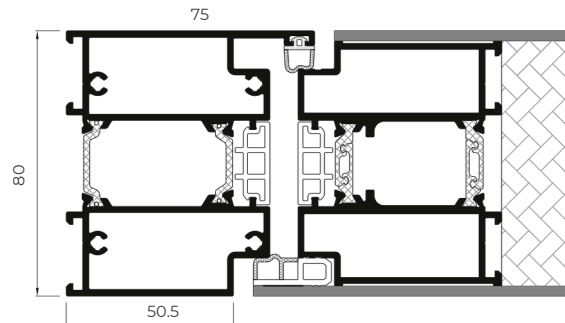
Glazed version

FEATURES		
Transmittance		UD ≥ 0,86 (W/m²K)
Air permeability		Class 4
Water tightness		Class 5A
Wind resistance		Class C5

Reference test 1.20 x 2.00 m / 1 Sash

POSSIBILITIES

Pivoting



MILLENNIUM PLUS PIVOT DOOR



Sightlines

Frame 80 mm, Sash 80 mm

Polyamide Strip Length

24 / 26 mm

Profile Thickness

Door 2,0 mm

Panel

80 mm

Maximum glazing

64 mm

Maximum Sash Dimensions

Width (L) 2100 (1700* + 400) mm

Height (H) 3000 mm

Maximum Sash Weight

250 kg

Consult maximum weight and dimensions according to typologies





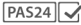
* Measured from the pivot axis

Bi-fold

DOOR

Bi-fold door system with 73 mm of frame depth and optimal thermal and acoustic performances, ideal for moderate climates.

FEATURES

Transmittance		$U_w \geq 0.97$ (W/m ² K)
Air permeability		Class 4 Class 9A
Water tightness		Class A3 Passed
Wind resistance		
Security test		

Wind resistance: reference test 2.700 x 2.530 m / 3 sashes
Security test: Configuration 330. 2701 x 2517 mm / 3 sashes

OPENING POSSIBILITIES



Inward

From 1 to 14 sashes

Outward

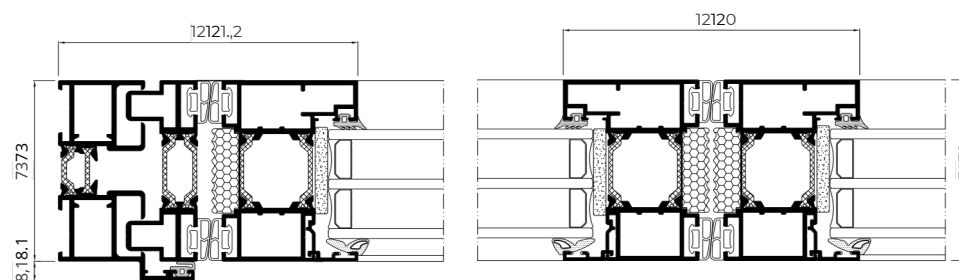
From 1 to 14 sashes

Possibility of corner sash at 90° without mullion

POSSIBILITIES

SECURITY
HARDWARE

ACCESSIBILITY



Sightlines

Frame 73 mm, Sash 73 mm

Polyamide Strip Length

Frame 20 mm

Sash 30 mm

Profile Thickness

Door 1.8 mm

Glazing

Max. 45 mm, Min. 25 mm

Maximum Sash Dimensions

Width (L) 1200 mm, Height (H) 3000 mm

Maximum Sash Weight

120 kg







Consult maximum weight and dimensions according to typologies



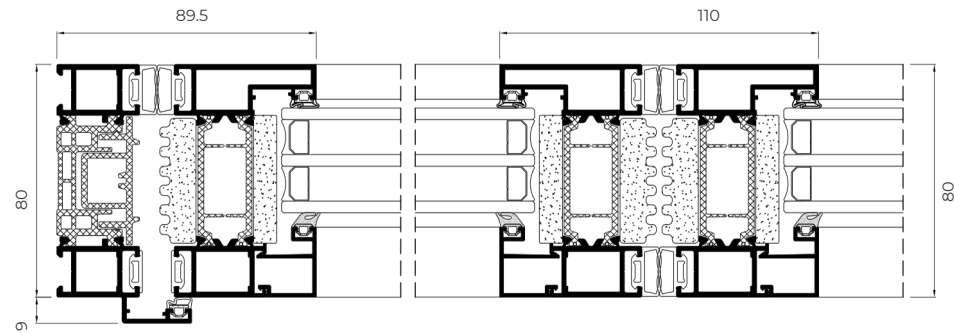
Bi-fold plus DOOR

Doors

Separate environments and unify spaces with this bi-fold door system with an 80 mm deep frame. This evolution of the Bi-fold series offers an excellent thermal and acoustic performance, thanks to its 45 mm thermal break and a glazing capacity up to 52 mm. Besides, it presents a slim central section of 110 mm which allows the maximisation of the glazed surface, filling the interior spaces with natural light.

FEATURES		
Transmittance		$U_w \geq 0.8$ (W/m ² K)
Air permeability		Class 4
Water tightness		Class E750
Wind resistance		Class C3
Repeated openings and closings		50.000 cycles (Main swing door) 25.000 cycles (Even sashes)
Security test	 <input checked="" type="checkbox"/>	Passed

Reference test 3.73 x 2.50 m, 3 sashes Security test: 3 sashes reference test.
Configuration 321 2.70 x 2.50 m Resistance to repeated openings and closings:
EN 1191, 3 sashes reference test. Configuration 321 3.73 x 2.50 m



OPENING POSSIBILITIES



Inward Outward
Up to 14 sashes Up to 14 sashes
90° corner sash without mullion

POSSIBILITIES



SECURITY
HARDWARE



ACCESSIBILITY

Sightlines

Frame 80 mm, Sash 80 mm

Polyamide Strip Length

Frame 45 mm

Sash 45 mm

Profile Thickness

Door 1.8 mm

Glazing

Max. 48 mm, Min. 25 mm

Maximum Sash Dimensions

Width (L) 1200 mm, Height (H) 3000 mm

Maximum Sash Weight

120 kg

Consult maximum weight and dimensions according to typologies







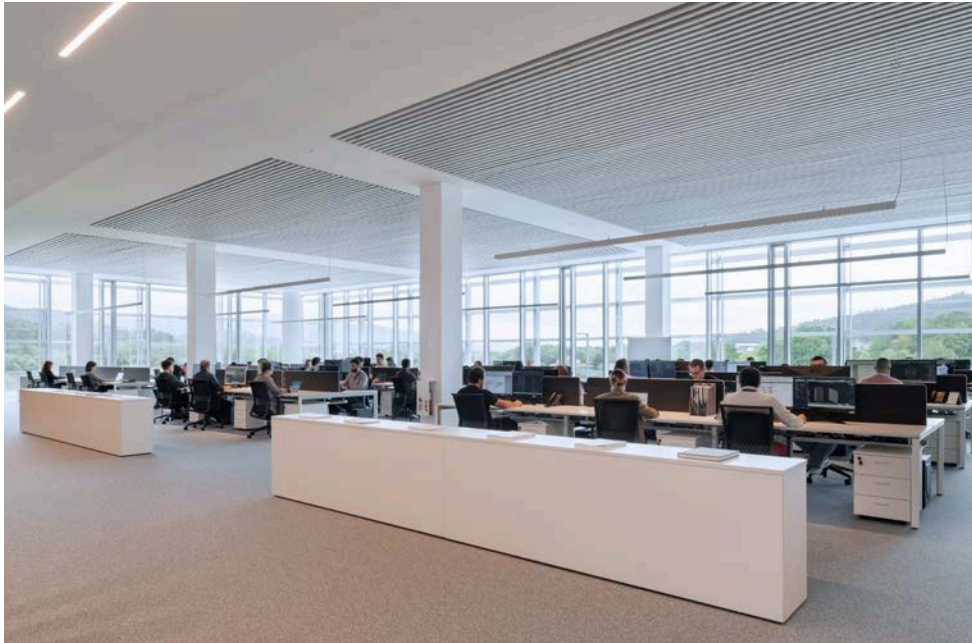
BI-FOLD PLUS DOOR



_ Cortizo Technological Campus
Spain

DESIGN

Development of bespoke profiles, preparation of details and on-site installations. Calculation and sizing of profiles, anchoring, accessories, composite panels, and glazing. 3D visualisation and rendering.



PERFORMANCE

The tests carried out at CORTIZO's Technological Campus allow for the assessment of the façades performance against the most extreme conditions: earthquakes, hurricanes, fires... Additionally, in this laboratory, the thermal and acoustic performance of all developed systems is also tested, as well as their behaviour in air, watertightness and wind tests

COMPREHENSIVE ASSISTANCE

85 engineers provide the necessary technical assistance at every stage of the project, from the initial design phase, calculations, and pricing, to planning and delivery control.

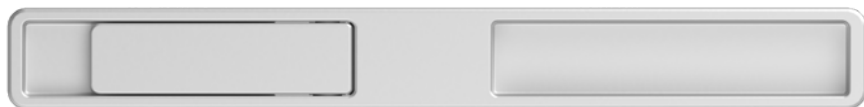
ARCH
INVISIBLE
FACADES



New handle embedded into the profile

Minimalist design invisible from the frontal view.

Available for top hung and parallel openings in the CORTIZO façade systems TP, TPH, TPV, SG of 52 and 62 mm.



TP 52 FAÇADE

TP 52

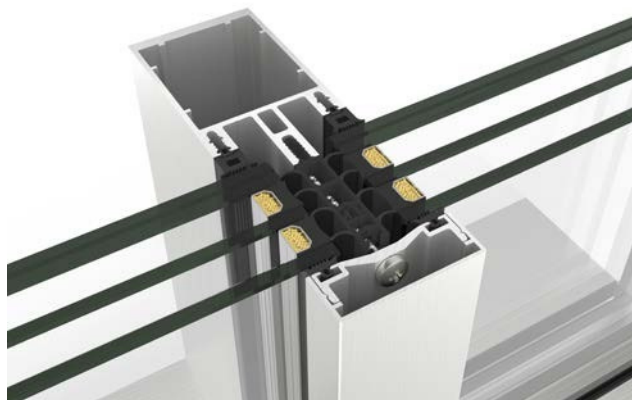
FAÇADE

Light façade system composed of 52 mm mullions and transoms that form the support structure. The glass is fixed at its four sides by a continuous pressure profile that is externally screwed to the screw ports incorporated in the mullions and transoms, concealing the entire fixing system under an embellishing profile or cover with an interlock profile of 52 mm.



FEATURES			
Transmittance		Ucw ≥ 0.6 (W/m²K)	
Air permeability		Class AE	
Water tightness		Class RE1350	
resistance *		Passed	

Reference test 3,00 x 3,50 m Certification CWCT
British Standard * Design loading 2000 Pa-Security loading 3000 Pa



Glazing

Max. 64 mm, Min. 4 mm

Sightlines

Mullion 52 mm

Transom 52 mm

Profile Thickness

Mullion 2,1 and 3,0 mm

Transom 2,1 mm

Thermal Break Zone

6, 12 and 30 mm stackable profiles

Cover

85 mm deep elliptical cover

H shape cover, 34 mm deep

Rectangular cover: 14, 19 100 & 145 mm deep

Flat cover

Pyramid shape cover, 155 mm deep

Minimum / Maximum opening dimensions

Hidden Top Hung:

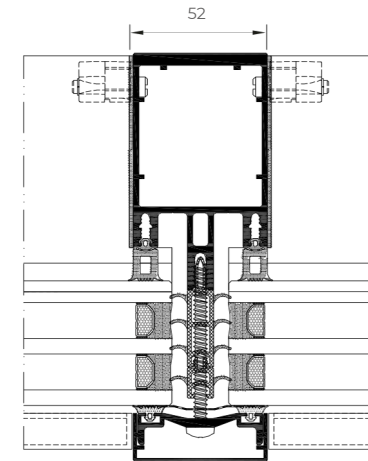
Width (L) 2500 - 500 mm, Height (H) 2500 - 650 mm

Hidden Side Hung / Tilt & Turn:

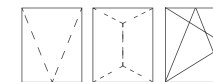
Width (L) 1400-500 mm, Height (H) 1900-600 mm

Hidden Parallel:

Width (L) 1500-450 mm, Height (H) 3000-650 mm



OPENING POSSIBILITIES



Outward Opening

Hidden top hung
Hidden parallel

Inward Opening

Hidden side hung / tilt & turn

Maximum Weight

200 kg Parallel opening

180 kg Hidden top hung opening

100 Kg Tilt & turn opening

750 Kg Fixed glazing

VERANDA

Gable or hipped roofing system comprised of flush mullions and transoms for 1st, 2nd, and 3rd level that allow for different drainage levels, guaranteeing perfect outflow of water, ventilation and water tightness.

Possibility of motorized top hung opening in roof areas.
This skylight system allows for an easy integration of our veranda systems, our hinged windows or our sliding window/door systems.

OPENING POSSIBILITIES



Outward opening
Motorized top hung

FEATURES

Transmittance  $U_{cw} \geq 0,6$ (W/m²K)

Air permeability  Class AE

Water tightness Wind  Class RE1350

resistance*  Passed

Reference test 3,00 x 3,50 m * Design loading 1200
Pa-Security loading 1800 Pa

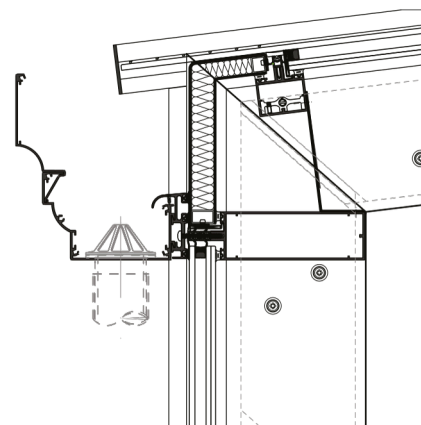
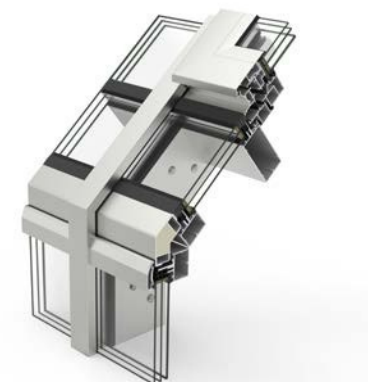
PROJECTING OPENING TEST

Air permeability Water  Class 4

tightness  Class E2100

Wind resistance  Class C5

Window reference test 1,23 x 1,14 mm / 1 sash



Sightlines

Mullion 52 mm

Transom 52 mm

Profile Thickness

2,1 & 3,0 mm

2,1 mm

Glazing

Fixed lights:

Max. 38 mm, Min. 26 mm

Window roof:

Max. 38 mm, Min. 24 mm

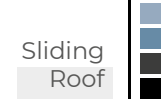
Minimum incline/slope Pt: 12% (7°)

Maximum incline/slope Pt: 85% (40°)

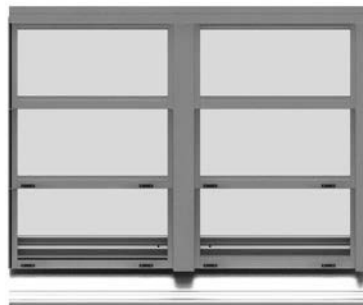
VERANDA



SLIDING ROOF



Sliding and automatic enclosure system that allows the opening and closing of a roofed area, allowing to enjoy the fresh air or a roofed space depending on the circumstances. This solution grants a 66% maximum opening of the span, featuring, in addition, a notable thermal and acoustic comfort thanks to its glazing capacity of 24 mm and the installation of solar control glass. CORTIZO's Sliding Roof is equipped with a series of complementary profiles that adjust the enclosure's water collection and drainage, thus guaranteeing the system's maximum water tightness.



Sightlines

Frame 133 mm

Sash 28 mm

Profile Thickness

Sashes 1,5 mm

Glazing

Cellular polycarbonate 25 mm

Sandwich panel 24 mm

Glass 24 mm (4 tempered / 12 / 4+4)

Maximum Sash Dimensions

Width (L)

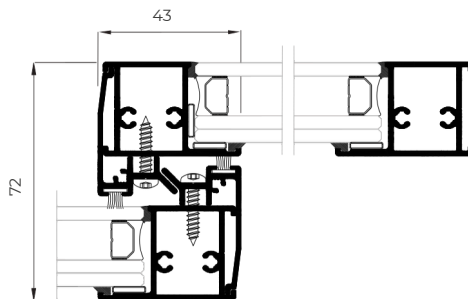
2300 mm (polycarbonate and sandwich panel)

1200 mm (glass)

Height (H) 1600 mm

Maximum Sash Weight:

75 Kg



OPENING POSSIBILITIES



Outward Opening

2 sashes and 1 fixed module and multiple falls

Maximum Span Opening: 66%

Incline/Slope: 8,5% (15°)

Roof Distance

Max. 4800 mm, Min. 3100 mm

Roof Width

Unlimited when joining modules

Motorised sash opening

Roof system watertightness test: Class APT

During the 6 hr. test, end of test and 24 hrs. following the same, no drips or humidity were detected in the enclosed area
Reference test: 4300 x 4160 mm in 3 adjustable rows, 9 sashes and 4 / 12 / 4+4 glass

SLIDING ROOF





PW80 OFFICE PARTITION WALL

PW 80

Office Partition Wall

Interior
Divisions

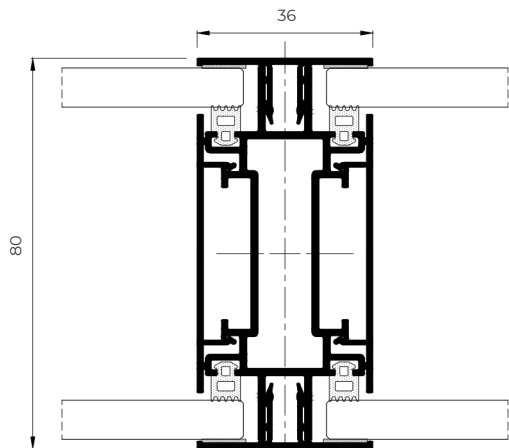
Designed to divide interior spaces, available in glass and panel version.
This solution allows the integration of side hung doors and venetian blinds.

FEATURES

Acoustic insulation  Rw up to 48 dB

Mechanical Performance  Category IV

Category IV reference test according to section 2.2.6 of EAD 210005-00-0505



Sections

80 mm (mullion)

Profile thickness

1,5 mm (mullion)

Sightlines

12 / 24 / 36 mm

Panel

10 - 20 mm

Glazing

6+6, 8+8, 10+10, 12+12 mm

Máx. weigh

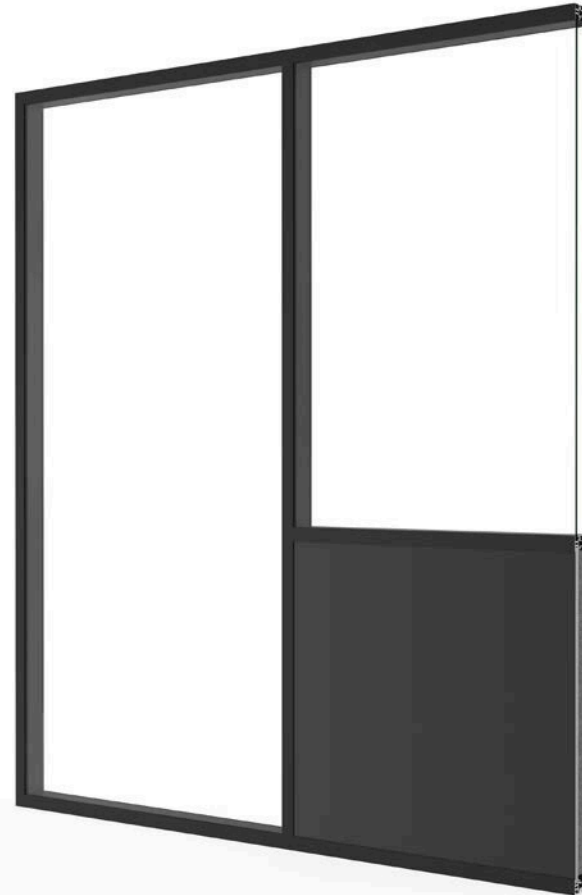
40 kg

Opening possibilities

8 and 10 mm Glass side hung door

40 mm Panel side hung door

Consult maximum weight and dimensions according to typologies




TAMIZ

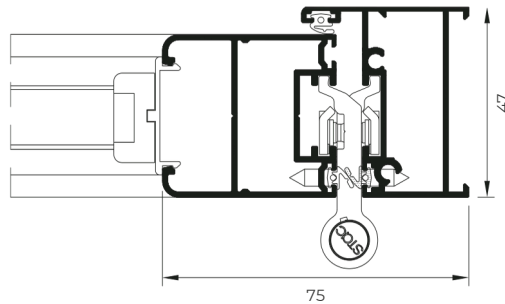
Side hung, sliding or bifold shutter system with fixed or adjustable louvres.

FEATURES

Thermal resistance of the shutter and the thermal chamber  $\Delta R = 0,08 \text{ (m}^2\text{K/W)}$

Wind resistance  Class 5

Reference test 1,50 x 1,50 m / 2 sashes



Sightlines

Frame 47 mm

Sash 40 mm

Profile Thickness

Window 1,3 mm

Door 1,5 mm

Maximum Sash Weight

Side hung 65 kg

Bifold 50 kg

Sliding 120 kg

Maximum Sash Dimensions

Side hung:

Width (L) 1200 mm, Height (H) 2500 mm

Bifold:

Width (L) 700 mm, Height (H) 2500 mm

Sliding:

Width (L) 2000 mm, Height (H) 3500 mm

Transmittance

U_w window transmittance

U_{ws} transmittance of the window-shutter system

U _w (W/m ² K)	U _{ws} (W/m ² K)
0,8	0,75
1,0	0,93
1,2	1,09
1,4	1,26
1,6	1,42
1,8	1,57
2,0	1,72
2,2	1,87
2,4	2,01
2,6	2,15
2,8	2,29
3,0	2,42
3,2	2,55



Closing possibilities

Closing with fixed or adjustable louvres

Opaque closing (sandwich panel)

Glazed closing

OPENING POSSIBILITIES



Side hung
Sliding
Bifold



BALUSTRADE

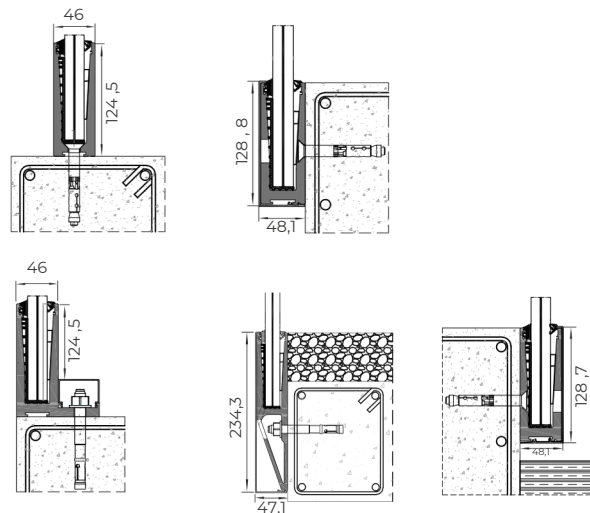
View Crystal / View Crystal Plus

Balustrades

Enjoy excellent views without any visual obstacle thanks to this balustrade system based on a "U" shaped aluminium profile on which laminated safety glass is fixed. Possibility of led strip illumination and drainage solution for exposed areas. Option of aluminium embellishing profile on the upper edge.

VIEW CRYSTAL: Resists a load of 1,0 kN/m applied at 1,1 metres from its bottom part. Suitable for use in areas A1, A2, B, C1, C2, D1, D2, G1 and G2, included in the CTE DB SE-AE, and A, B, C1, C2, C3, C4, D and E, in accordance with Eurocode 1.

VIEW CRYSTAL PLUS: Resists a load of 3,0 kN/m. Suitable for use in all areas from CTE DB SE-AE and areas A, B, C1, C2, C3, C4, C5, D and E, in accordance with Eurocode 1.



LAMINATED GLASS COMPOSITIONS

10-1,52-10	10-1,14-10	10-0,76-10	10-0,38-10
8-1,52-8	8-1,14-8	8-0,76-8	8-0,38-8
6-1,52-6	6-1,14-6	6-0,76-6	6-0,38-6



Assembly Possibilities

- Over slab
- Flush over slab
- Edge slab
- Inverted edge slab
- Flush with the slab
- Flush with the pavement

Maximum Height

1100 mm

Tests according to standards UNE 85237, UNE 85238 and UNE 85240. Established requirements in CTE (DB SU-1 and DB SE-AE) And established requirements in Eurocode 1 according to EN 1991-1-1/AC

Static horizontal test towards the exterior Static horizontal test towards the interior Dynamic test with mild object Dynamic test with hard object Verification of section 3.2 of DB-SE-AE of CTE Verification of the specifications of the Eurocode 1 according to table 6.12 for use categories of 3kN/m

Classification according to UNE 85240, Class A-Excellent

Reference test on balustrade with glass and extruded aluminium, fixed to the slab edge with (H) 1100 X (L) 1500 mm of total dimensions above ground level

Reference test on balustrade with glass and extruded aluminium, fixed over the slab with (H) 1100 X (L) 1500 mm of total dimensions above ground level.

VIEW CRYSTAL BALUSTRADE

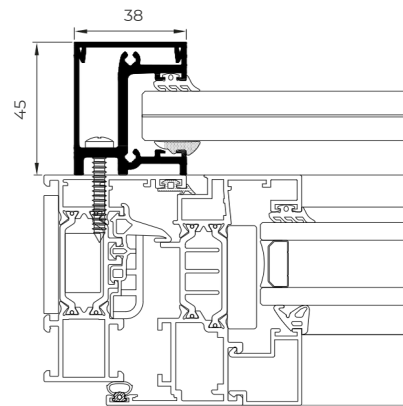


JULIET

Balcony



Balustrading solution for installation on the exterior of the carpentry by means of concealed fixings, allowing for the total opening of balconies without the risk of falling.



Classification according to UNE 85240, Class A-Excellent
Reference test on glass and extruded aluminium balustrade of (H) 1200 x (L) 1800 mm.

Tests according to standards UNE 85237, UNE 85238 and UNE 85240.
Requirements established in CTE (DB SU-1 AND DB SE-AE) and in Eurocode 1 according to EN 1991-1-1 for use category of up to 1,6 KN/m.

Static horizontal test towards the exterior. Static horizontal test towards the interior. Static vertical test. Dynamic test with mild object. Dynamic test with hard object. Verification of section 3.2 of DB SE-AE of CTE. Security test.



LAMINATED GLASS COMPOSITIONS

8-1,52-8	6-1,52-6
8-1,14-8	6-1,14-6
8-0,76-8	6-0,76-6
8-0,38-8	6-0,38-6



Maximum width
1800 mm



JULIET
BALCONY



contemporary
enclosures



accessories



STYLISH HANDLE

The new **Stylish handle** presents a **simple design**, with more accentuated lines and **stylish aesthetics for dressing in style** the CORTIZO windows, balconies and doors.

WINDOW HANDLE



OFFSET HANDLE



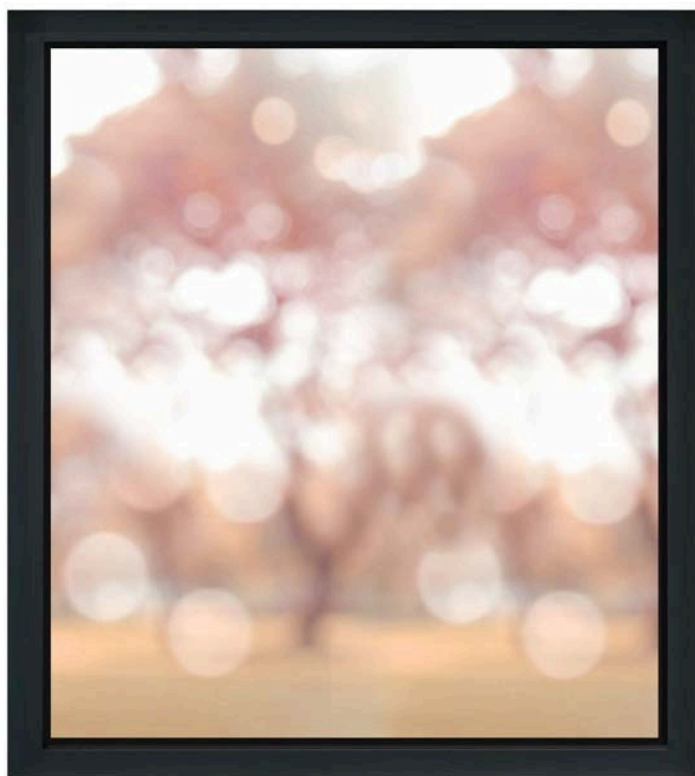
HANDLE WITH KEY



DOOR HANDLE

Design with slim backplate
Version for external, internal and PVC assembly
Available in window and door version
Quick setting-up
Available in the full powder-coating range

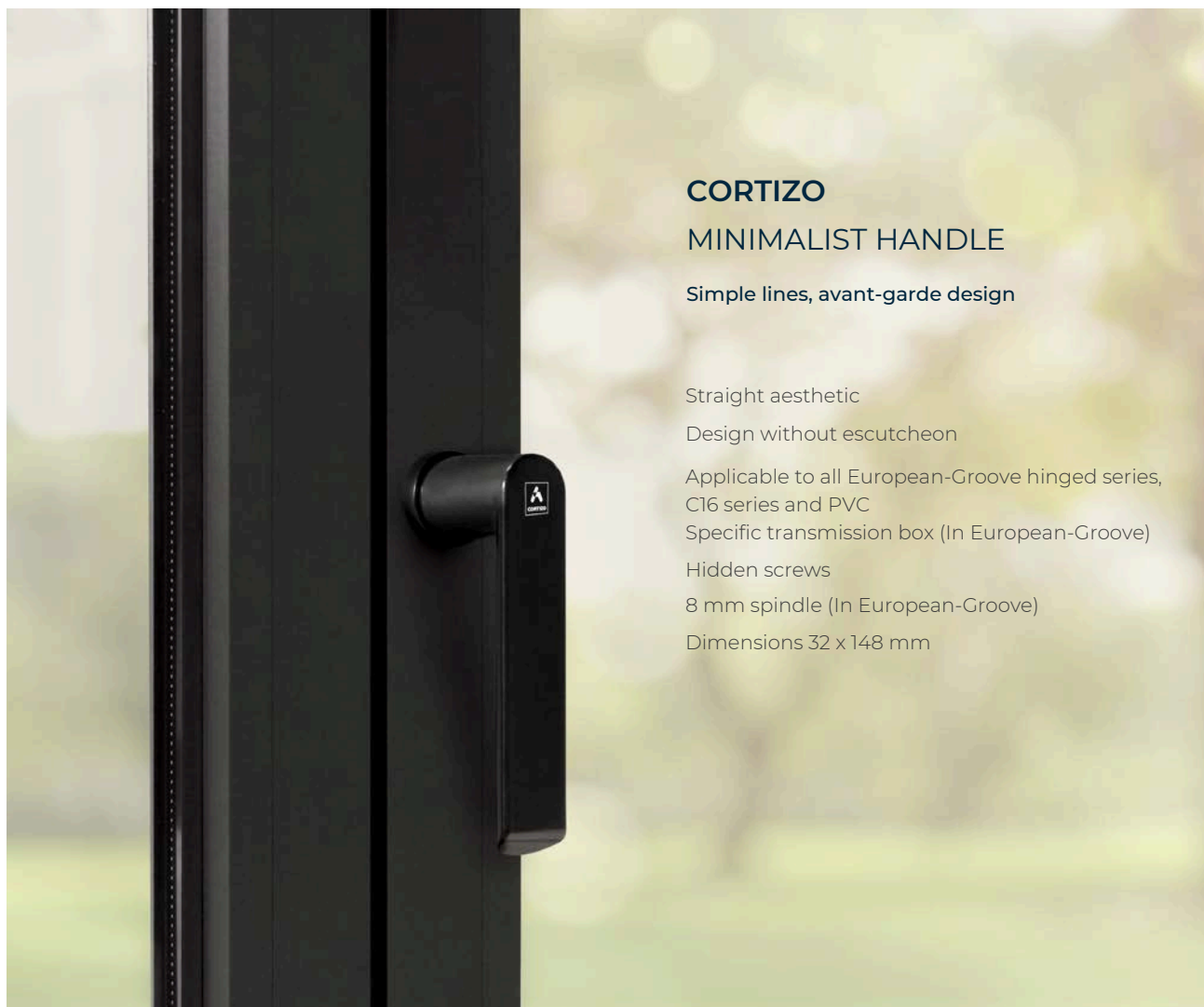




ARCH INVISIBLE HANDLE

Exclusive handle integrated within the sash, imperceptible from the frontal view

Compatible with the COR 80 Hidden Sash and COR 70 Hidden Sash systems
Ergonomics, robustness and easy handling in the opening and closing operations
Ideal for combination with concealed hinges, achieving a totally clean aesthetic
Dimensions 27.5 x 234 mm



CORTIZO MINIMALIST HANDLE

Simple lines, avant-garde design

Straight aesthetic

Design without escutcheon

Applicable to all European-Groove hinged series,
C16 series and PVC

Specific transmission box (In European-Groove)

Hidden screws

8 mm spindle (In European-Groove)

Dimensions 32 x 148 mm



CORTIZO HANDLE

Reduced escutcheon design
Adaptability to transmission box and multilock system
Concealed hardware
Spindle: 7 mm
Dimensions 32 x 148 mm



CORTIZO DOOR HANDLE

Reduced escutcheon design
Opening to the right and to the left versions
Suitable for exterior and interior assembly
Available in door version
Concealed hardware
Spindle: 8 mm
Dimensions 32 x 148 mm



INOX HANDLE

Reduced escutcheon design
Adaptability to transmission box and multilock system
Available in door version
Concealed hardware
Spindle: 7 mm
Dimensions: 31 x 135 mm



**SIRIUS
HANDLE**

Curved aesthetics
 Design with a reduced escutcheon
 Suitable for multipoint lock
 Available for windows or doors
 Spindle: 7 mm
 Dimensions: 32 x 155 mm



**CORTIZO CREMONE
WITH KEY**

Maximum security
 3 locking positions: full lock,
 tilt only and tilt and turn
 Dimensions: 33 x 190 mm



**REMOVABLE
CORTIZO CREMONE**

Easy assembly Handle clipped on
 the escutcheon Possibility of
 removing the handle
 in any position
 Maximum durability
 Dimensions: 33 x 173 mm



**ART INFINITY
PULL HANDLE**

Suitable for high traffic
 and large dimension doors
 Straight or curved design
 Dimensions: 450 x 50 mm



**LIFT & SLIDE
HANDLE**

Avant-garde aesthetic
 Exclusive to systems
 4600 and 4700 Lift & Slide
 Versions with or without key
 Multiple combinations:
 handle / handle
 handle / finger pull
 Tested to 25,000 cycles
 Spindle of 10 mm
 Dimensions: 37 x 290 mm



CORTIZO OFFSET HANDLE

Handle specially designed
for sliding systems
Reduced escutcheon
Suitable for exterior and interior
Spindle: 7 mm
Dimensions: 32 x 158 mm



VISION SECURITY LOCK

Key lockable Integration
of the locking
system in the profile with
minimalist aesthetics Up
to 4 locking points
Dimensions: 36 x 260 mm



FLUSH VISION SECURITY LOCK

Key lockable
Lock flush with the profile
Up to 4 locking points
Dimensions: 36 x 260 mm



VISION SECURITY MINI LOCK

Straight aesthetics in line
with the minimalist style
of the system
Dimensions: 26 x 92 mm



VISION CENTRAL LOCK

Suitable for the COR VISION and
COR VISION PLUS systems
Integrated in the interlock profile
It allows to conceal the
lateral sashes
Dimensions: 450 x 50 mm



CORTIZO HD HARDWARE

Hinge specially designed for large dimensions
such as floor to ceiling solutions

3D regulation

Maximum dimensions: 1200 x 3500 mm*

Maximum weight/sash: 160 Kg

* For window configurations of large dimensions and weight,
consult with the Cortizo Architecture and Engineering Department.

SPECIAL HARDWARES



EVO SOFT HARDWARE

3D regulation. All locking points are adjustable
Closing force up to 50% less than traditional hardware
Possibility of multiple locking points
All sliding elements incorporate a clip to eliminate unnecessary gaps
Maximum weight/sash: 120 Kg
For window configurations of large dimensions and weight, consult with the Cortizo Architecture and Engineering Department



EVO SOFT CLX 160 KG HARDWARE

3D regulation. All locking points are adjustable
Closing force up to 50% less than traditional hardware
Possibility of multiple locking points
All sliding elements incorporate a clip to eliminate unnecessary gaps
Maximum weight/sash: 160 Kg
For window configurations of large dimensions and weight, consult with the Cortizo Architecture and Engineering Department



EVO SECURITY HARDWARE

High security hardware
Mushroom security cams with tightness adjustment and anti-theft locks
protection against breakage and robbery
Possibility of up to 14 locking points







RUSTIC | MINIMALIST | MODERN



+91 84540 02202



www.rarehomesolution.in



marketing@rarehomesolution.in